

Depending on OLD of the Rohloff SPEEDHUB 500/14 hub and the design of the derailleur hanger, a different number of spacers must be placed between the snubber support and the snubber axle in order to position the snubber coil with the greatest possible overlap with the belt. An overview of the possible configurations is given in the following table.

Rohloff Model	OLD	RDM Shimano Snubber	RDM + QR Snubber
500/14	135	1x Spacer, M6x30	without
500/14	142	1x Spacer, M6x30	without
500/14	148	2x Spacer, M6x30	1x Spacer, M6x30
XL 500/14	170	1x Spacer, M6x30	without
XL 500/14	177	1x Spacer, M6x30	without
XXL 500/14	190	2x Spacer, M6x30	1x Spacer, M6x30
XXL 500/14	197	2x Spacer, M6x30	1x Spacer, M6x30



Illustration 4:
Without spacer

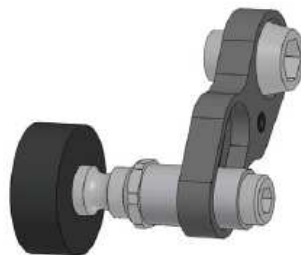


Illustration 5:
1x Spacer

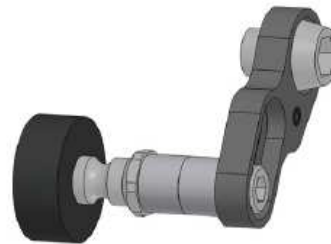


Illustration 6:
2x Spacer